

# INSTALLATION INSTRUCTION

## PRODUCT STRUCTURE

SKU: GSK-JW2-20373

Genesis Series:  
Gear Lever Shift Knob

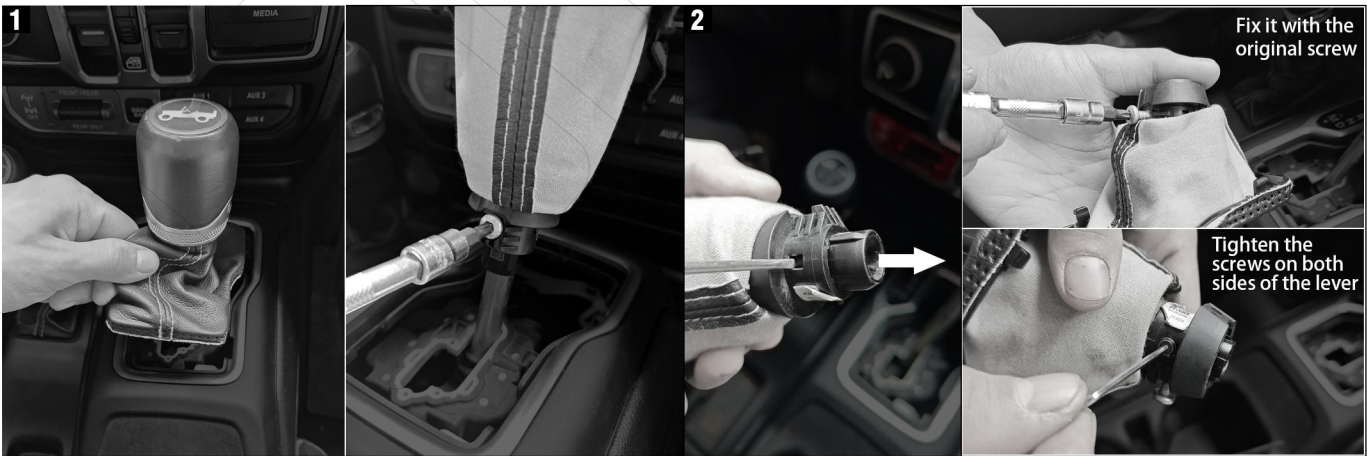
### PACKAGE LISTING

- |                              |
|------------------------------|
| 1.Shift lever * 1            |
| 2.Four-wheel drive lever * 1 |



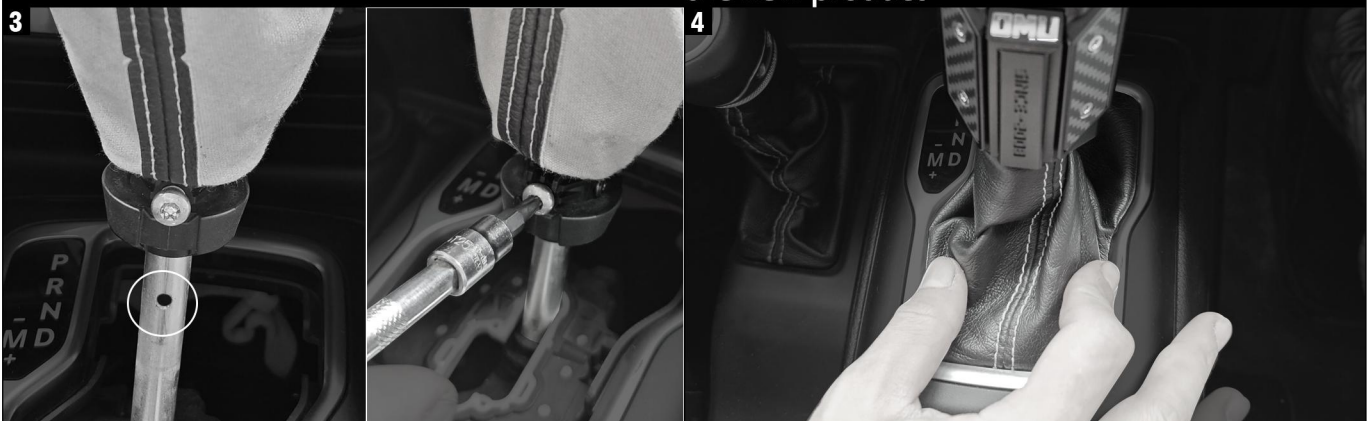
## INSTALLATION DIRECTION

Compatible for Jeep Wrangler JL JT



Remove the original gear lever first

Remove the gear lever cover and install it onto the new product



Install the new gear lever, align it with the hole and tighten the screw

Press back to complete the installation of the gear lever cover

# INSTALLATION INSTRUCTION

5



Remove the original four-wheel drive gear lever

6



Remove the gear lever cover and install it onto the new product

7



Secure with screws and align the holes

8



Tighten the screws and press the gear lever cover back to complete the installation

9



Loading display